

Summer Campaign

Health Campaign 2012

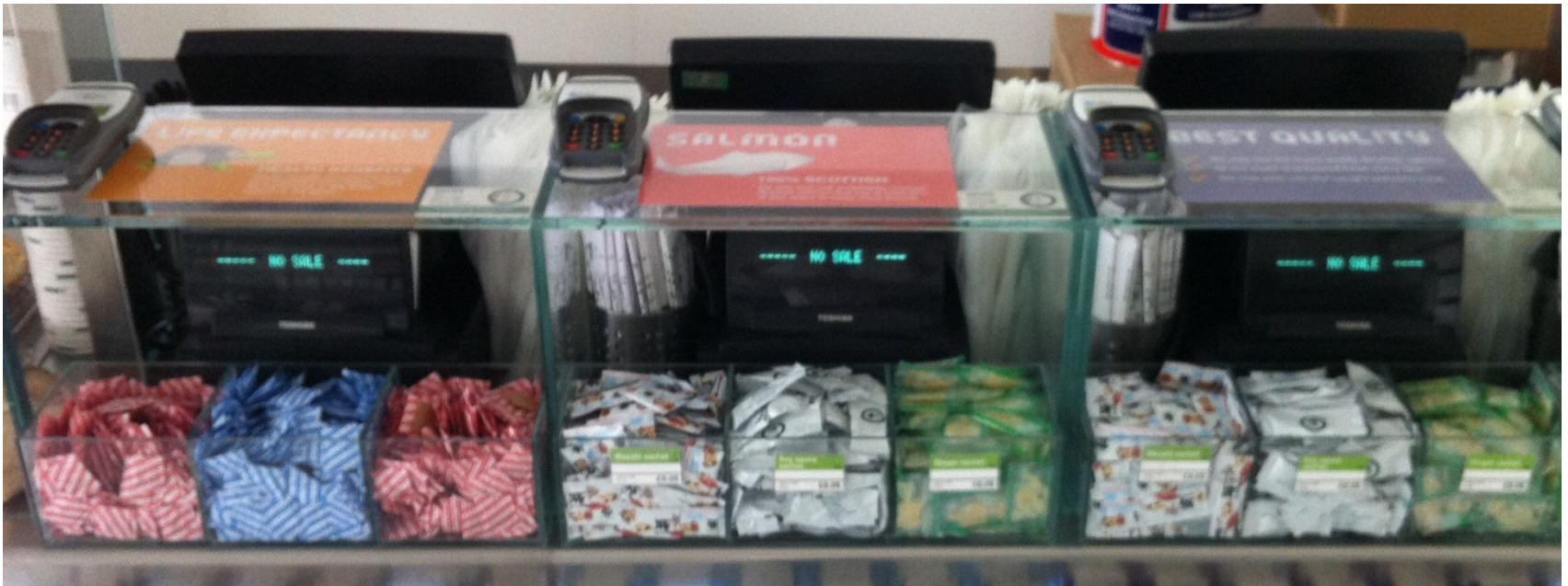
Large Name Card Holders

- Large holders are to be placed along side the regular items.
- Place the cards in front of key products that match.
 - **Edamame** in front of edamame and dotted amongst the sets.
 - **Salmon** in front of the salmon nigiri/hoso. And in front of the salmon box sets.
 - **Nori** in front of the hosomaki/futomaki/gunkans and also by the hosomaki sets.
 - **Agar Agar** in front of the Seaweed onigiri and the seaweed Gunkan



Under till point stickers

- Place in the centre of your till point make sure that there is no air bubbles underneath as they will show through!
- Ensure that there are never two the same next to each other.
- If you have two banks of tills ensure that there are no two the same on either side.



Fridge stickers



- Place the fridge stickers in the middle of the fridge. Ensure that they are all level with each other.
- Alternate between designs. (see photos)
- Do not place more than one sticker per fridge.



Set name cards with Calories

- Replace all of your set name cards with the new ones that contain the calorie information.
- Ensure that all of the holders are not damaged and are clean!
- Discard the old ones. (If you need more just ask!)



FAO: CHEFS

Under 350 Cal Stickers

- Attach the stickers to the top right hand corner of the sushi box.
- Ensure the sticker is upright.
- Ensure the sticker matches the product.
- Ensure the packet looks neat and tidy and is sealed properly.
- Attach these stickers to the following items:
 - Sashimi set
 - Salmon nigiri set
 - Salmon sashimi set
 - Mini hosomaki set
 - Mixed veg set



You can order these
from Ace with your
regular order

FAO: CHEFS

Under 550 Cal Stickers

- Attach the stickers to the top right hand corner of the sushi box.
- Ensure the sticker is upright.
- Ensure the sticker matches the product.
- Ensure the packet looks neat and tidy and is sealed properly.
- Attach these stickers to the following items:
 - Mixed maki set
 - Yasai roll set
 - Mixed California roll set
 - Spicy mini chirashi set
 - Mini chirashi set
 - Pumpkin croquette salad
 - Harmony set
 - Hana set



You can order these
from Ace with your
regular order

Opening Hours

- Opening hours are to be stuck on the **outside** of the glass in front of where the current ones have been stuck on the inside. **DO NOT REMOVE THE WHITE CUT VINYL ONES!!!**

American Express

- American express Stickers – If your branch now accepts amex please stick the sticker below or next to the **CCTV/FACEBOOK/NO DOGS** sign with only the logo and cards welcome part, **REMOVE** the travellers cheques part.

